



FSCCL
Most Outstanding
Alumni
1875- 2025

Sigma Chi
Fraternity



JOHN BRADFORD HARPER CLASS OF 1875



John B. Harper

John B. Harper has the dual distinctions of being the first and sole graduate of Purdue University in 1875 and of being a co-founder of the Delta Delta Chapter of Sigma Chi, the first fraternity at Purdue, in the same year. Harper was born in Fort Madison, Iowa, in 1855 or 1856. A graduate in chemistry, Harper is known as a pioneer in civil engineering. He led the work on the Zuni Dam in Black Rock, NM, at the time the largest dam of its type to have been constructed.

Harper returned to Purdue in 1907, after an absence of 25 years, remarking in surprise at the tremendous institution which greeted him. Harper died a year later in Los Angeles, four years after the completion of the Zuni Dam, on which there is a commemorative plaque. He is buried in Durango, Colorado.

GEORGE ADE CLASS OF 1887



George Ade

George Ade gained fame as a writer, syndicated newspaper columnist and playwright. Ade was born in Kentland, Indiana, in 1866. He became the last *sub rosa* initiate of Sigma Chi, at a time when fraternities were banned at Purdue. Ade developed his talent for turning local human-interest stories into humorous satire at the *Chicago Record*. As a successful playwright Ade was one of the first to have three shows running simultaneously on Broadway.

He is recognized as the “Modern Patron Saint of Sigma Chi”, where he served as the 14th Grand Consul, wrote “The Sigma Chi Creed” and led the construction of the Purdue Chapter House at 202 Littleton. In 1922, Ade and fellow alumnus David Ross helped fund the construction of Ross-Ade Stadium. Ade’s Hazelden estate in Brook, Indiana, is a Sigma Chi and an Indiana Historical Site. Ade died at Hazelden in 1944. His grave site in Kentland, Indiana, is a Sigma Chi National Memorial.



JOHN T. McCUTCHEON CLASS OF 1889



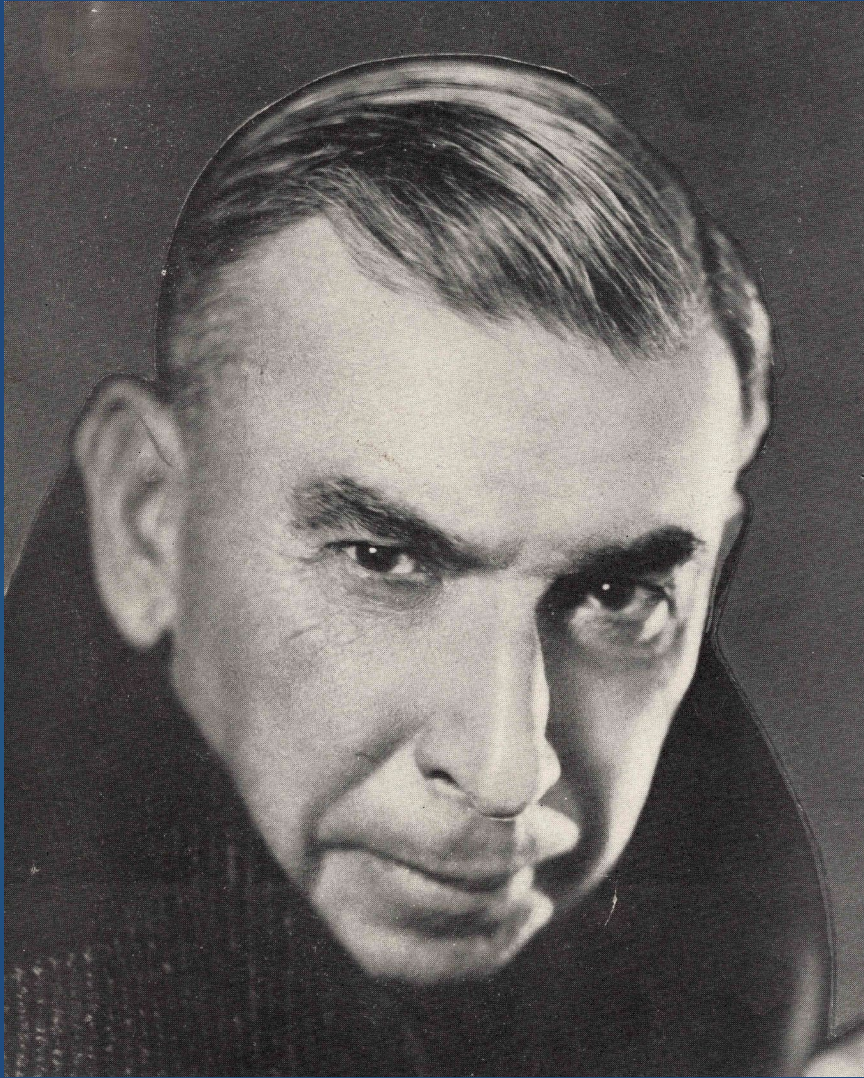
John T. McCutcheon

John Tinney McCutcheon was a newspaper political cartoonist, war correspondent, combat artist, and author, known even in his lifetime as the “Dean of American Cartoonists”. He won the Pulitzer Prize for his 1931 cartoon, “A Wise Economist Asks a Question.” McCutcheon was born in Tippecanoe County, Indiana, in 1870. In 1902 he joined the *Chicago Tribune*. His cartoons appeared in “*The Trib*” for 40 years. McCutcheon as a war correspondent and combat artist covered the Spanish-American War and World War I.

McCutcheon’s works are in many collections at Purdue, the Indiana Historical Society, and the Chicago Public Library. McCutcheon was honored as a “Significant Sig”. Purdue’s McCutcheon Residence Hall and Lafayette’s McCutcheon High School are named in his honor. McCutcheon passed away in 1949.



BOOTH TARKINGTON CLASS OF 1893



Booth Tarkington

Newton Booth Tarkington was a novelist and dramatist best known for his novels *The Magnificent Ambersons* and *Alice Adams*, both of which won Pulitzer Prizes. He was one of only four novelists to win the Pulitzer Prize for Literature more than once. In the 1910s and 1920s he was considered America's greatest living author. He attended Purdue University for two years before transferring to Princeton. As a novelist, Tarkington was both prolific and highly successful. Two of his novels, *Penrod* and *Seventeen*, were particularly successful.

In 1940 Purdue President Edward C. Elliot awarded him with an honorary Doctorate of Humane Letters degree. Tarkington died in his home in Indianapolis in 1946. Purdue's library holds many of his works in its Special Collection's Indiana Collection. Purdue's Tarkington Hall is named in his honor. Tarkington is recognized as a "Significant Sig" by Sigma Chi Fraternity.



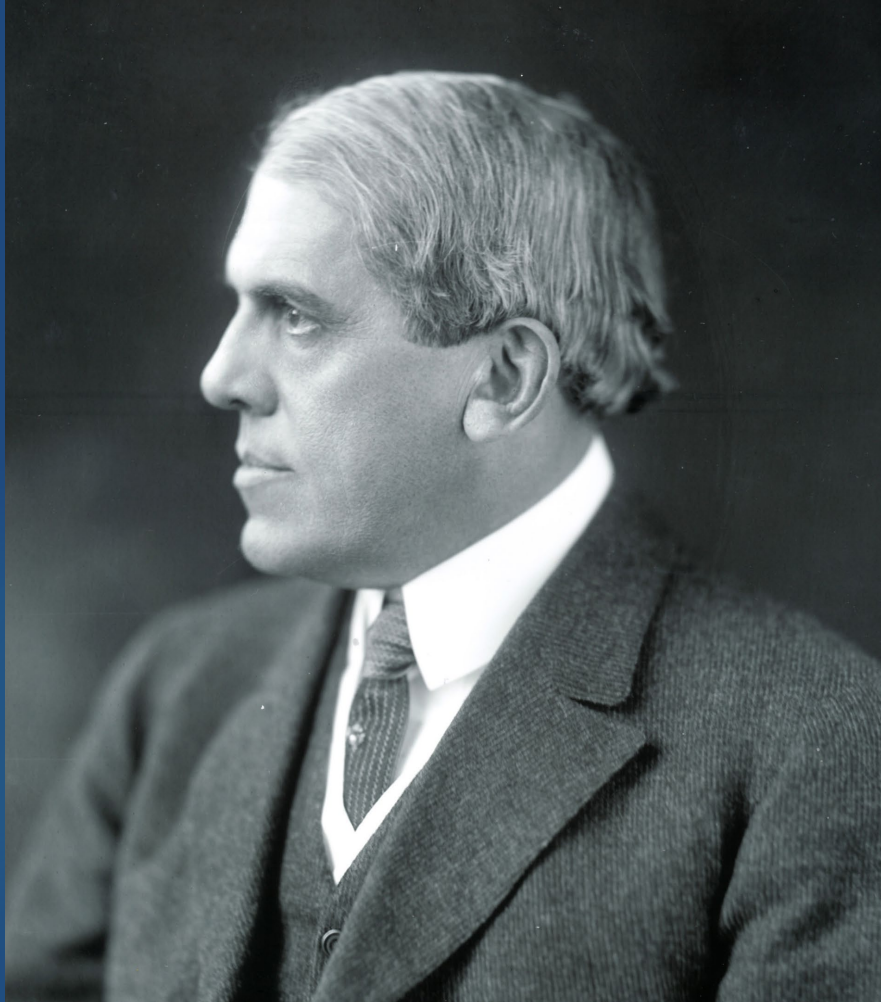
Frederick Scheuch

FREDERICK C. "PROF" SCHEUCH CLASS OF 1893



Frederick Scheuch was born in Lafayette, IN, in 1871, but grew up in Spain, where his father was U. S. Consulate. When he started at Purdue, he could barely speak English and had to employ a translator. In 1895 Scheuch was one of four original faculty members of the University of Montana, teaching engineering, French, German, and Spanish. During his career in Montana, Scheuch served as interim university president five times, but did not wish to serve in this position permanently, saying it would take him away from his daily contact with students.

Scheuch is considered "The Father of Sigma Chi in the West", where he established five undergraduate chapters. Scheuch served as the 30th Grand Consul of Sigma Chi and he was one of the first group to be inducted into the Order of Constantine, the Fraternity's highest honor. Scheuch died in Los Angeles in 1954. His grave site in Missoula is a Sigma Chi National Memorial.



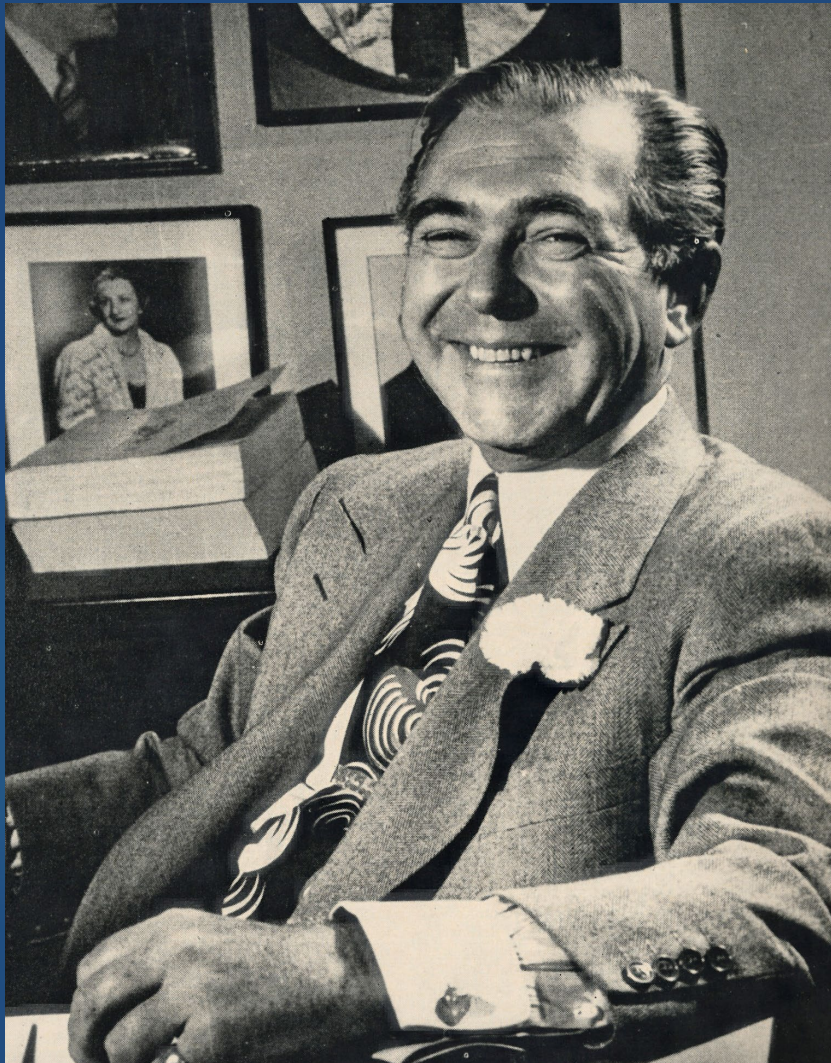
Chase S. Osborn

CHASE SALMON OSBORN CLASS OF 1880



Chase S. Osborn was the 27th Governor of Michigan from 1911 to 1913. He attended Purdue University and was a member of Sigma Chi Fraternity, but he left Purdue before graduating. He was a reporter in Chicago and Milwaukee, before moving to Sault Ste. Marie, Michigan, where he ran another newspaper. He served as a member of the University of Michigan Board of Regents from 1908 to 1911.

In 1910 Osborn was elected Governor of Michigan. After his term as governor, Osborn traveled the world. In 1919 he wrote an autobiographical book, *The Iron Hunter*, describing his work prospecting for iron ore in Wisconsin and Upper Michigan. On Osborn's 80th birthday in 1941, he was recognized by the State of Michigan as its Greatest Statesman and Most Famous Citizen. Osborn is one of Sigma Chi's first "Significant Sigs". Osborn died in 1949 and is interred at Duck Island near Sault Ste. Marie.



Steve Hannagan

STEVE HANNAGAN CLASS OF 1922

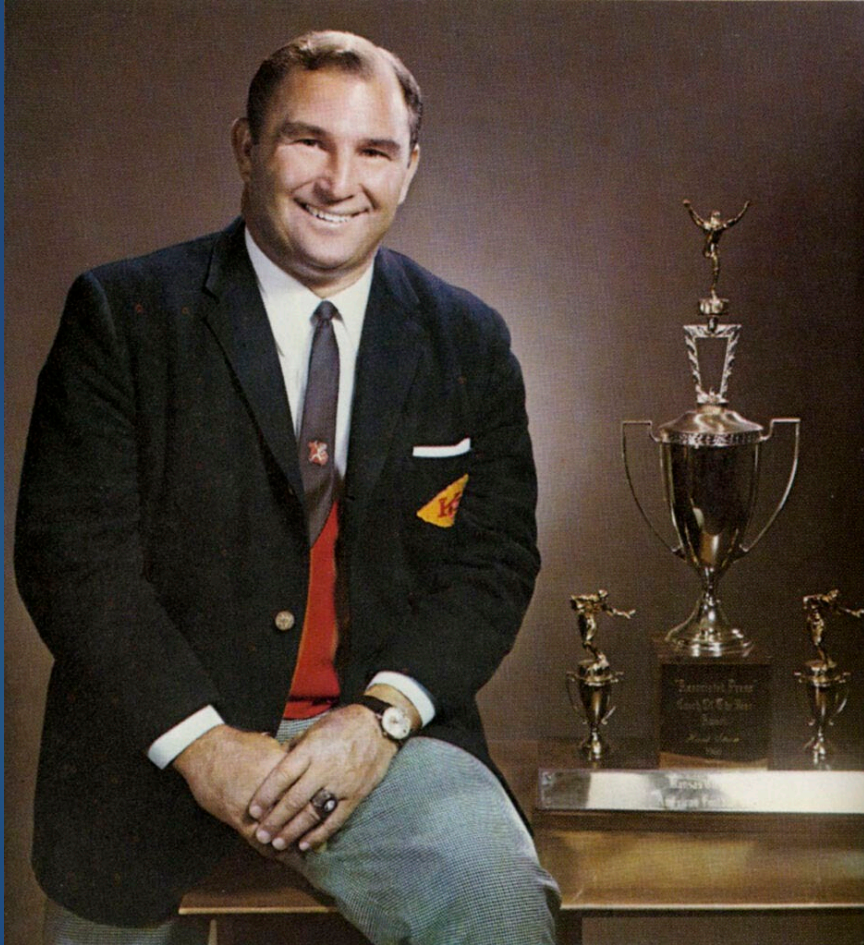


Steve Hannagan, recognized as the “Prince of the Press Agents”, was born in 1899 in Lafayette, IN. After high school, Hannagan was enrolled at Purdue University for two years. During that time, he became friends with George Ade and John T. McCutcheon, who encouraged him to join Sigma Chi Fraternity.

Hannagan was a rare combination of a hard driving, trusted, and highly successful pioneer of public relations. Known for his ground-breaking publicity campaigns for the Indianapolis 500, Miami Beach, Sun Valley, Las Vegas, and Coca Cola. He developed many of the press and publicity principles that are commonly used today. Hannagan knew or worked with nearly every major figure and celebrity of his era. Hannagan died in 1955 while on a trip in Africa. He is buried in St. Ann’s Parish Cemetery in Lafayette. Hannagan is recognized by Sigma Chi Fraternity as a “Significant Sig”.

HENRY L. "HANK" STRAM

CLASS OF 1948

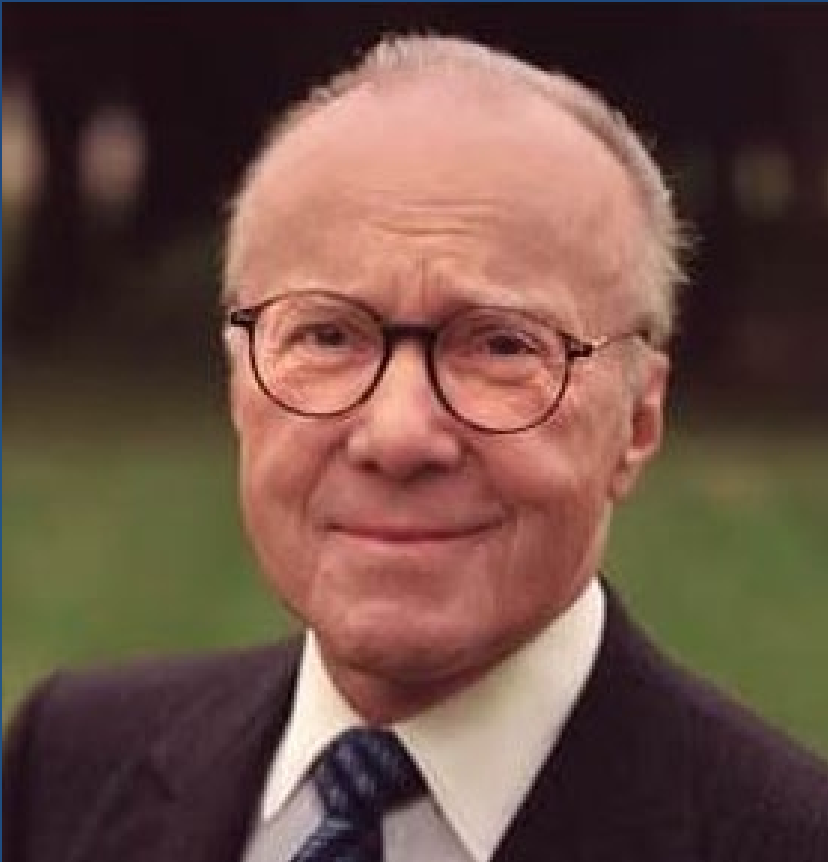


Hank Stram

Hank Stram grew up in Gary, Indiana, where the press box of Lew Wallace High School is named in his honor. Stram was head coach of the NFL's Kansas City Chiefs and New Orleans Saints. In his fifteen-year coaching career he won three AFC championships and took teams to Super Bowls I and IV with the Chiefs. In Super Bowl IV the Chiefs defeated the Minnesota Vikings. Stram is a member of the NFL Hall of Fame and Purdue Athletic Hall of Fame. He credited with introducing Gatorade® to the NFL because of his close association with Ray Graves, coach at the University of Florida.

Stram had a long broadcasting career with CBS following his retirement from coaching. Stram was an assistant football coach for the Boilermakers from 1948 to 1955 and the head baseball coach from 1951 to 1955. He is recognized by the Sigma Chi Fraternity as a "Significant Sig".

GERALD D. HINES CLASS OF 1948



Gerald Hines

Gerald Hines was the founder and chairman of Gerald D. Hines Interests, a privately held real estate firm. Hines was regarded as a leading visionary in the commercial real estate industry. His firm developed close to 1000 projects, including more than 100 buildings over 25 stories tall. Born in Gary, Indiana, in 1925, Hines graduated from Purdue with a degree in mechanical engineering in 1948.

Hines' first large-scale commercial development came in 1967 when Shell Oil Company hired him to construct a new downtown Houston headquarters. The Galleria, Pennzoil Place, Transco (now Williams) Tower, and more than 900 developments would follow. The firm also completed projects in Spain, Italy, Germany, and the United Kingdom. In 2001 Hines was elected a member of the National Academy of Engineering. Hines died in 2020, just a week after his 95th birthday. Hines is recognized by the Sigma Chi Fraternity as a "Significant Sig."

KEITH CARTER CLASS OF 1949



Keith Carter

Keith Carter was born in Akron, Ohio, in 1924. Carter won the silver medal in the 1948 Olympics in the 200-meter breaststroke. Following the Olympics, Carter returned to Purdue for his senior year, where he became the NCAA and AAU National Champion in the 200-yard breaststroke. He also was the Big Ten champ in 1948 in the 50-yard freestyle and 200-yard breaststroke and repeated in 1949 as the 200-yard breaststroke champion. Carter set several national records as he became an All-American for the Boilermakers.

Before enrolling at Purdue, Carter served in the United States Army Air Forces as a bombardier in World War II. Carter was also a Masters swimmer, breaking the world record in the 100 meters short course fly in the 59 – 65-year-old age group in 1990. In 1994 he was inducted into the inaugural class of the Purdue Intercollegiate Athletics Hall of Fame. Carter died in 2013 in Asheville, NC.



ROBERT A. “BOB” DEMOSS CLASS OF 1949

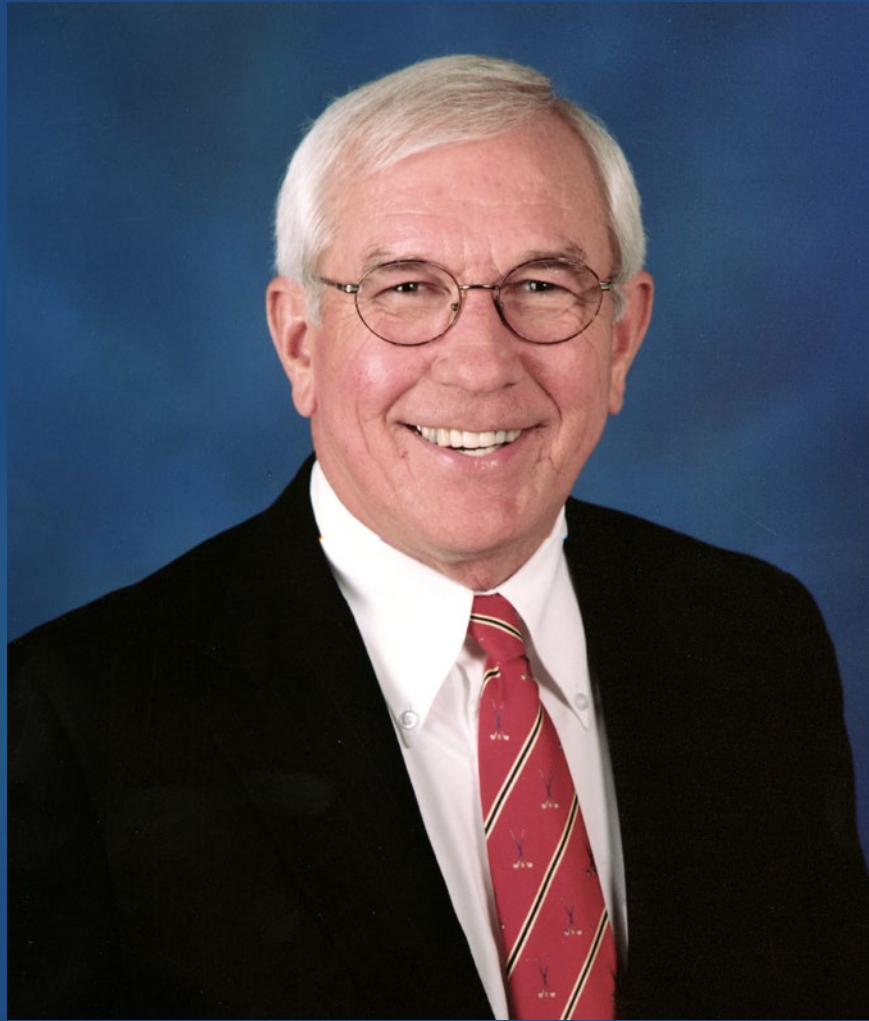


Bob DeMoss

Bob DeMoss made a name for himself as a freshman quarterback in 1946 when he led Purdue to a 35-13 upset win at No. 4 rated Ohio State. During DeMoss's career, he passed for 2,759 yards and 23 touchdowns, a record at the time. After a brief career in the National Football League, he spent his entire career as a Boilermaker assistant coach, head coach, and administrator.

DeMoss was Purdue's head coach from 1970-1972. DeMoss, a member of the Purdue Intercollegiate Athletics Hall of Fame, is considered the patriarch of Purdue's famed Cradle of Quarterbacks, which includes five Sigma Chis: DeMoss, Bob Griese, Mark Herrmann, Jim Everett, and Drew Brees. Born in 1927 in Dayton, Kentucky, DeMoss passed away in West Lafayette in 2017. He is recognized as a “Significant Sig” by Sigma Chi Fraternity and is honored by a plaque in the football offices of the Mollenkopf Athletic Center.

JAMES E. "JIM" DORA CLASS OF 1958



Jim Dora

Jim Dora founded and chaired General Hotels Corporation, a developer and operator of award-winning hotels throughout Indianapolis and Central Indiana. Dora sat on numerous boards, with the most notable being the Capital Improvement Board of Managers, where he was President from 1985 to 1993.

Dora gave back generously to Purdue serving as Chairman of the President's Council, Vice Chairman of the Vision 21 Capital Campaign, as an Old Master, and on the Advisory Board for the RHIT Hotel School. Purdue has honored him with the Order of the Griffin and an Honorary Doctorate Degree. Jim co-chaired the \$7.4 million renovation of the Purdue Chapter House. Sigma Chi Fraternity has recognized Dora as a "Significant Sig" and as a member of the Order of Constantine, the two highest honors of the Fraternity.

J. BRUCE HARRELD CLASS OF 1972



Bruce Harreld

Bruce Harreld began his career at The Boston Consulting Group where he served as an officer and director. He then spent a decade with Kraft General Foods before he co-founded Boston Market. In 1995 he joined IBM where he directed IBM's Emerging Business Opportunities program that produced more than 20 new businesses for IBM. In 2006 he became responsible for IBM's global marketing activities. Harreld joined the faculty at Harvard Business School in 2009. In 2015 he was appointed President of the University of Iowa where he expanded curriculum and formed a public-private partnership that generated over \$1 billion in new funding.

As president of Sigma Chi as an undergraduate and an active campus leader, he credits Purdue with teaching him how to lead. Harreld has received Distinguished Alumni and Distinguished Engineering Awards from Purdue and was an Old Master. Sigma Chi Fraternity has recognized Harreld with its "Significant Sig" award.

PATRICK J. LOEHRER, SR., M.D. CLASS OF 1975



Patrick Loehrer

Dr. Patrick Loehrer is the Distinguished Professor of Oncology at Indiana University. He is director emeritus of the Indiana Cancer Center and current Director of the Center for Global Oncology. He founded the Healthcare-Oncology Program which sees over 8,000 cancer patients a year and screens over 1,500 women for cervical and breast cancers a month in western Kenya. Dr. Loehrer has served on numerous boards including the American Board of Internal Medicine, American Society of Clinical Oncology, and past chair of the NCI Clinical Trials Advisory Committee. Dr. Loehrer has received numerous awards including the ASCO Visionary Leadership and Humanitarian Awards.

Dr. Loehrer attended Rush Medical College. He has been awarded Purdue's Outstanding Mechanical Engineer and Distinguished Engineering Alumni Awards and participated in the Old Masters program. Sigma Chi Fraternity has recognized Dr. Loehrer as a "Significant Sig".

KEITH KRACH CLASS OF 1979



Keith Krach

Keith Krach is currently Chairman of the Krach Institute for Tech Diplomacy at Purdue and Chairs the Global Tech Security Commission. Previously he served as CEO & Chairman of DocuSign; Chairman & CEO of Ariba; Chairman of Angie's List; VP of General Motors; and Chairman of Purdue's Board of Trustees. Purdue's Krach Leadership Center also bears his name. In 2025, he received the nation's top manufacturing award for contributions in robotics, automation, and semiconductors. As Under Secretary of State, Krach built the Clean Network; architected the \$280B CHIPS Act; mobilized action against CCP's genocide in Xinjiang; and was the highest-ranking US official to visit Taiwan in 41 years.

Krach received Sigma Chi's International Balfour Award in 1979, and helped create Sigma Chi's Mission 365, Horizons, and the Krach Transformational Leaders Workshop. He is a member of the Order of Constantine, a Significant Sig, and served as 64th Grand Consul (National President).



STEVE COSLER CLASS OF 1977



Steve Cosler

Steve Cosler has been an Operating Partner with Water Street Healthcare Partners, a private equity firm focused on healthcare, since 2006. He previously served as president and CEO of Priority Healthcare Corporation where he led the company's successful initial public offering in 1997 and its ultimate sale to Express Scripts in 2005. Previously, Steve held executive positions with CoreSource, a U.S. administrator of employee health benefits. Before focusing his talents on healthcare, Steve achieved a distinguished career with IBM Corporation.

Cosler founded and is chairman emeritus of Elevate Indianapolis, an organization focused on the advancement of urban youth in Indianapolis. In 2023 the Purdue Board of Trustees approved the co-naming of the Kampen Golf Course to the Kampen-Cosler Course in recognition of his support of Purdue athletics. Sigma Chi Fraternity has recognized Cosler as a "Significant Sig".

GREGORY J. HARBAUGH

CLASS OF 1978



Greg Harbaugh

Greg Harbaugh is a former NASA astronaut who flew on four space shuttle missions as a mission specialist and performed three spacewalks, including one in support of the repair and refurbishment of the Hubble Space Telescope. Joining NASA's Johnson Space Center after graduation, Harbaugh held engineering and technical management positions in Space Shuttle flight operations. He became an astronaut in 1988 and left NASA in 2001.

From 2006 through 2016, Harbaugh was CEO and President of the Sigma Chi Foundation. Harbaugh founded InnerSpace Consultants in 2020. Harbaugh has received numerous awards and honors including the NASA Distinguished Service and Exceptional Service Medals and the Purdue Outstanding Aerospace Engineer and Astronaut Alumnus Awards. The Sigma Chi Fraternity has recognized Harbaugh as a "Significant Sig" and a member of the Order of Constantine.



DOUG SCHREIBER CLASS OF 1986



Doug Schreiber

Doug Schreiber is the winningest coach in Purdue University baseball history. Schreiber was a four-year starter at second base for Purdue from 1983-1986. He holds multiple records as a player. Prior to returning to Purdue as head baseball coach, Schreiber coached at Ball State, Butler, Notre Dame, and Arizona State Universities. Schreiber elevated the Boilermakers to become a major force in the Big Ten Conference, while also making big strides on the national level. He was named head coach in 1998 and remained the leader of the program through the 2016 campaign.

Schreiber was named Big Ten Coach of the Year in 2012, when Purdue reached the NCAA regional tournament. After leaving Purdue, Schreiber coached at McCutcheon High School in Lafayette. Schreiber is currently the coach of the Purdue Fort Wayne (Indiana) Mastodons.



Brian Craig

BRIAN H. CRAIG CLASS OF 1998



Brian H. Craig began his career at Medtronic helping establish cardiac resynchronization therapy and developing the world's smallest pacemaker and one of the first extravascular implantable cardioverter-defibrillators. Craig joined ev3 in 2009 where he transformed their atherectomy franchise contributing to the company's acquisition by Covidien. At Covidien, he served as VP Marketing-Emerging Markets in Singapore, focusing on bringing medical innovations to developing countries. Craig then led strategy and business development for Surgical Innovations, completing over \$600M in acquisitions.

Currently founder and CEO of ConvergAscent, Craig has launched five medical startups and holds over 13 patents spanning cardiac, endoscopy, and drug delivery applications. He also partners with international organizations to address global healthcare inequities. Craig is recognized by Sigma Chi Fraternity as a "Significant Sig."

DREW BREES CLASS OF 2001



Drew Brees

Drew Brees played 20 years in the NFL with the San Diego Chargers (5 years) and with the New Orleans Saints (fifteen years). He was elected to 13 Pro Bowls while being named 2004 Comeback Player of the Year, 2006 All-Pro Team, 2006 Walter Payton NFL Man of the Year, 2008 and 2011 NFL Offensive Player of the Year, and Super Bowl XLIV Champion and MVP.

Drew and his wife, Brittany, established the Brees Dream Foundation in 2003 and have contributed over \$50,000,000 to help improve the quality of life for cancer patients and provide care, education and opportunities for children and families in need. Additionally, Brees co-founded SHIELD 1 Foundation to address housing, healthcare, education, business opportunity, economic development, urban farming, support of HBCUs, social justice and legislative reform. Brees has participated in five USO trips visiting Kuwait, Iraq, Afghanistan, Germany, Turkey, Djibouti, Dubai, Okinawa, and Guantanamo Bay.



Jim Vruggink

JIM VRUGGINK **CENTRAL MICH, CLASS OF 1970**



Jim Vruggink served Purdue as Sports Information Director, Athletic Public Relations Director and Director of Special Projects for University Relations and Intercollegiate Athletics until his retirement in 2019. Vruggink coordinated Heisman Trophy campaigns for quarterback Jim Everett, running back Mike Alstott, and quarterback Drew Brees. Jim also served as executive director of the National Football Foundation's Joe Tiller Chapter of Northwest Indiana. Jim was inducted into the Indiana Football Hall of Fame in 2025.

Vruggink served as the president of the College Sports Information Directors of America (CoSIDA). He received the NIT-CoSIDA Presidential Citation in 1997 and the Scoop Hudgens Lifetime SID Award from the All-American Football Foundation in 2002. Jim was inducted into the CoSIDA Hall of Fame in 2004 and is a member of the Central Michigan University Journalism Hall of Fame.

